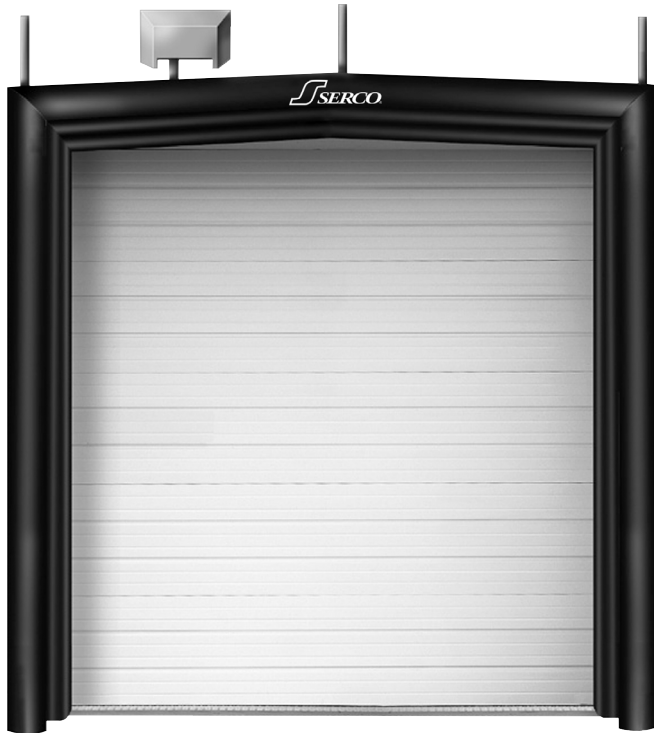


SI 310 Inflatable Rail Shelter

Product Specifications



DESIGN HIGHLIGHTS

- Top, side and optional bottom air chambers constructed from durable 10 oz./sq. yd. vinyl-coated fabric
- Provides excellent sealing for a wide variety of rail cars and rail applications
- Conforms to irregularities present on the side of some rail cars
- Inflated by a high volume, low pressure moto
- Unit retraction assisted by upward biased track-trolley support system
- Can be sized to accommodate a variety of rail ramp configurations

APPLICATION DATA

The Serco SI-310 air inflatable dock shelter provides protection against the elements for a wide variety of rail dock applications. Sturdy upward biased track-trolley assemblies support air chambers from above.

Door width: _____ ft. _____ in.

Door height: _____ ft. _____ in.

Dock height off top of rail: _____ in.

Dock to inside near rail: _____ in.

Dock to centerline of track: _____ in.

(NOTE: Use "Inside Near Rail" dimension when using field measurements or "Centerline of Track" dimension when working with architectural plans. You do not need both dimensions.)

CERTIFIED FOR CONSTRUCTION

BY _____

COMPANY _____

ADDRESS _____

DATE _____

PROJECT INFORMATION

JOB NAME _____

ADDRESS _____

GENERAL CONTRACTOR _____

DISTRIBUTOR _____

QUANTITY _____

SPECIAL INFORMATION SPECIFY

Quantity _____

☐ Complete Unit ☐ Parts Only (Indicate Parts Required. For Replacement Air Bag, Specify Air Inlet Tube Location.)

Model: ☐ SI-310-3 (3-Sided Cover and Frame) ☐ SI-310-4 (4-Sided Cover and Frame)

(SI-310 4-sided unit should be sized so that bottom can be mounted 24" below dock floor while maintaining top coverage range.)

Standard Frame: 2" X 12" Pressure Treated Wood Framing

Motor/Blower: ☐ ½ HP, 115V, 50/60 Hz, 5.5 Amps (Switch w/pilot light included) (Motor can be wired for 220V, 1Ph, 50/60 Hz, 2.8 Amps)

☐ Standard Single Motor/blower

☐ Optional Two Motor/blowers (Required when total volume of shelter exceeds 275 cubic feet.)

☐ None

Air Inlet Tube Location: ☐ Standard Top Left ☐ Center ☐ Top Right ☐ Specify _____

Unit Width: ☐ 12" ☐ 13" ☐ 14" ☐ 15" ☐ 16" ☐ 17" ☐ 18" ☐ _____

(Add 24" to door width to determine nit width, minimum width is 12'-0")

Unit Height: ☐ 12" ☐ 13" ☐ 14" ☐ 15" ☐ 16" ☐ _____

(Standard minimum unit height for 4-sided unit is 13'-0")

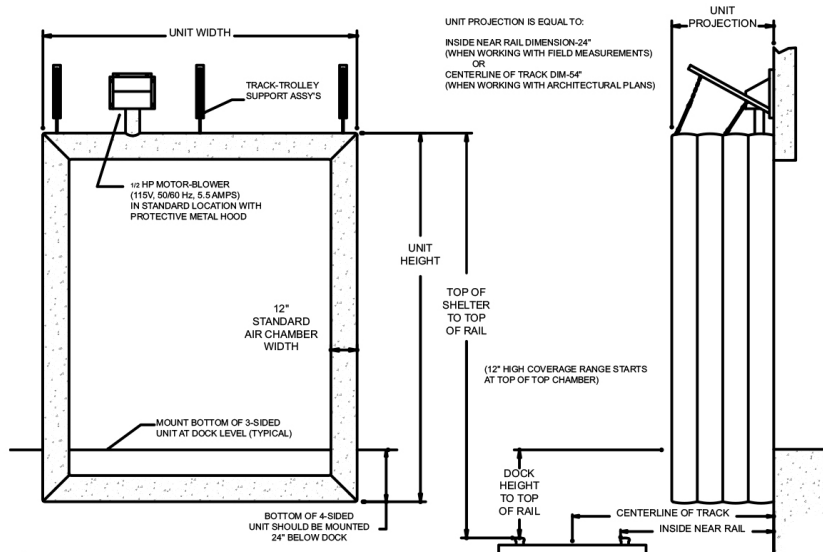
Projection: ☐ 48" ☐ 54" ☐ 60" ☐ 66" ☐ 72" ☐ 78" ☐ 84" ☐ _____

Aig Bag Fabric: ☐ 16 oz Hypalon® ☐ 10 oz Vinyl

*Note: Maximum % of slope without tapering shelter frame is 3%

Colors: ☐ Black ☐ Blue

Optional Head Curtain Drop: ☐ 48" ☐ 54" ☐ 60" ☐ 66" ☐ 72" ☐ 78" ☐ 84" ☐ _____



Serco

1612 Hutton Drive, Suite 140
Carrollton, TX 75006
800.933.4834
www.sercodockproducts.com

4Front Engineered Solutions reserves the right to change specifications and designs without notice and without incurring obligations. 4Front Engineered Solutions products may be the subject of one or more U.S. and/or foreign, issued and/or pending, design and/or utility patents. Serco as word and logo are registered trademarks belonging to ASSA ABLÖY Entrance Systems AB or other companies controlled by the same organization. All rights reserved.

©ASSA ABLÖY. All rights reserved. Part of ASSA ABLÖY. Printed in USA. Form # SPS-S310-0725