

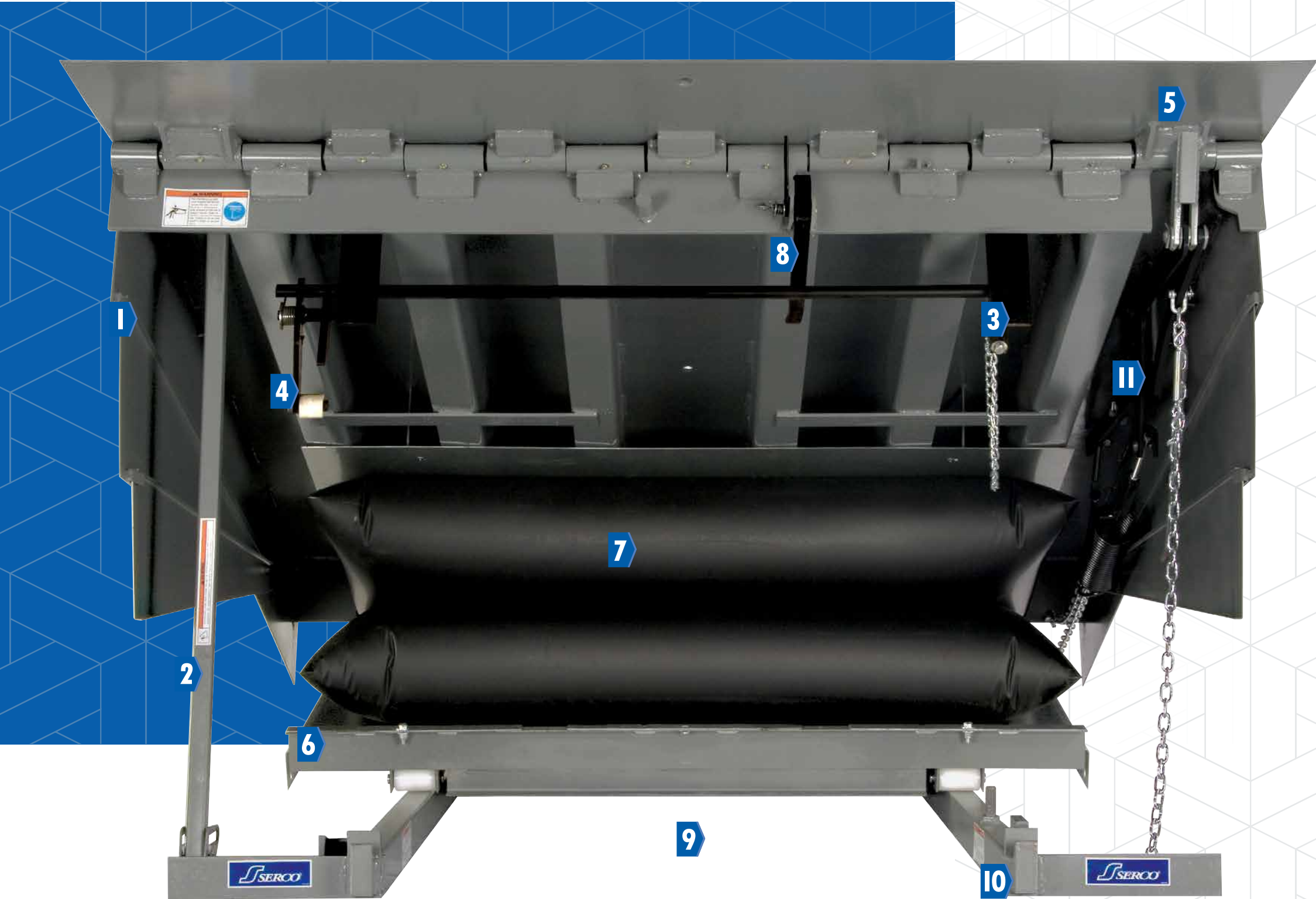
# AIR POWERED DOCK LEVELER



# AB SERIES DOCK LEVELER

The Serco Air Bag Dock Leveler combines advanced air lifting technology with simple operation and a clean, efficient design to deliver maximum operational efficiency and low cost of ownership.

The Serco AB Series air-powered dock leveler includes all the Serco standard features plus a reliable, reinforced coated polyester air bag that can withstand minor punctures, extreme weather conditions, chemical spills and more. No springs. No hold-down. No costly replacements or repairs. That equals years of trouble-free operation and low maintenance down the road.



## PRODUCT DETAILS

- 1. Full-Operating-Range Toe Guards:** For maximum safety and strength, toe guards are welded into place and have OSHA safety yellow markings per ANSI standards.
- 2. Integral Support Strut:** Keeps ramp raised for routine maintenance and cleaning. Mounted to frame; lock out, tag out capable.
- 3. Safety Legs:** Provide emergency support should a truck depart with a load on the leveler platform.
- 4. Optional Reflex™ Anti-Stump-Out System:** The patented sensor roller rides along a reinforced cam surface, provides fluid free-float motion while also providing a measure of free-fall protection in the event of premature trailer separation.
- 5. Reinforced Lip:** Made with high tensil steel safety tread plate with beveled leading edge. Optional 18" or 20" Lip for longer lip purchase.
- 6. Removable Pan:** Easy-to-reach pan can be removed for additional pit clean-out.
- 7. Polyvinylchloride-coated polyester fiber air bag:** Lifting bag with RF welded, reinforced polyvinyl chloride coated polyester fibers operates without loss of performance in temperatures from -65°F to +200°F, even if punctured. The airbag cannot be over-inflated (maximum motor pressure is 4 PSI), and has been tested for chemical immersion and rodent damage.
- 8. Integral Lip Support Latch:** Provides support to the lip during routine maintenance and pit cleaning.
- 9. CLEAN FRAME® Design:** All AB Series Dock Levelers are built with an open frame, clean pit design to provide easy access to the pit floor for cleaning and scheduled maintenance.
- 10. Nite-Lock:** Permanent "Nite-Lock" to prevent unauthorized entry beneath locked overhead door.
- 11. HYDRA CAM Lip Extension:** Automatically extends lip at full height.

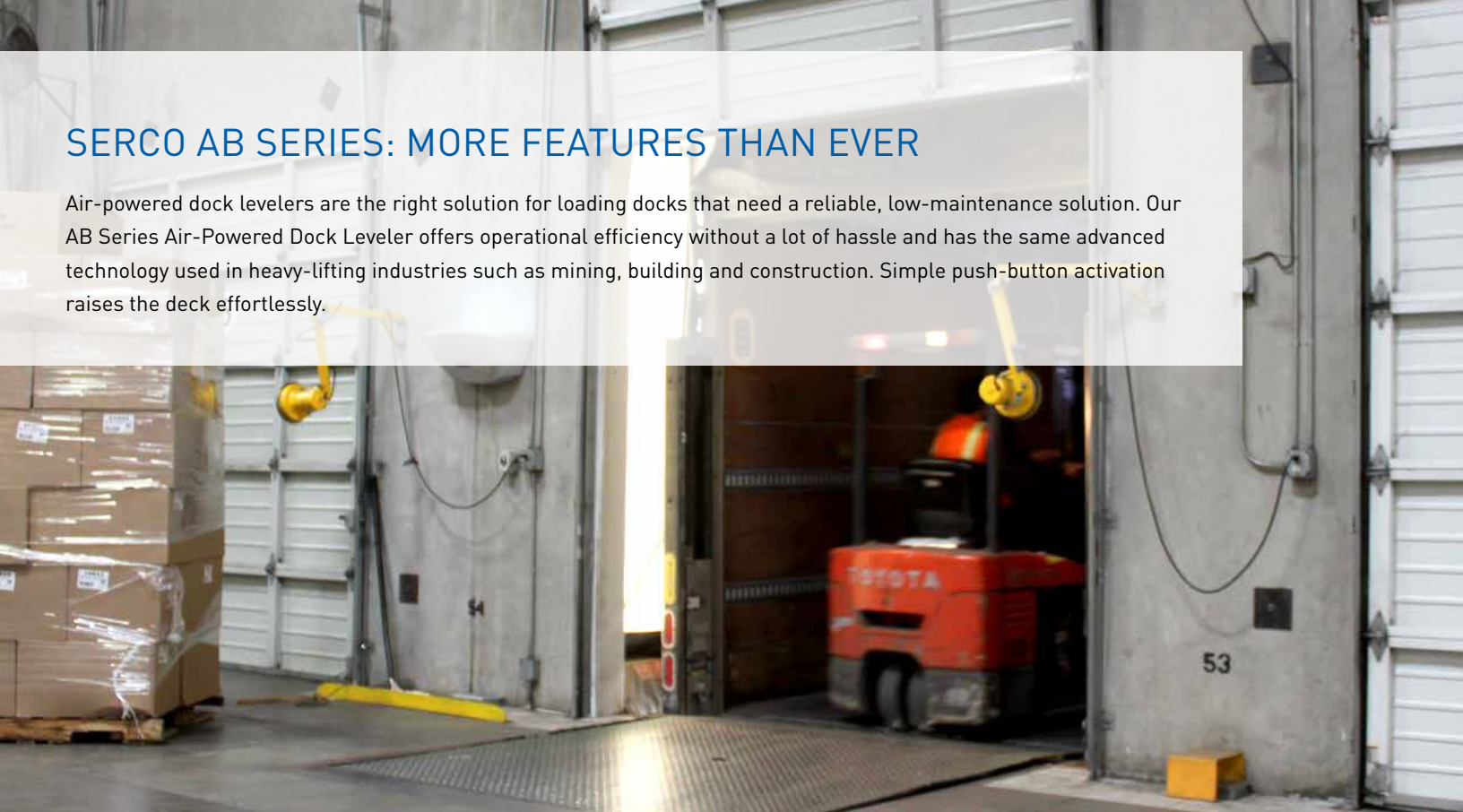
## 5-YEAR GUARANTEE

Serco guarantees the Air Bag Dock Leveler will stand up to the toughest conditions. To prove it, we offer a **5-Year Unlimited Parts & Labor Guarantee on the air bag, seals, fittings, gaskets, hoses and motor.**



## SERCO AB SERIES: MORE FEATURES THAN EVER

Air-powered dock levelers are the right solution for loading docks that need a reliable, low-maintenance solution. Our AB Series Air-Powered Dock Leveler offers operational efficiency without a lot of hassle and has the same advanced technology used in heavy-lifting industries such as mining, building and construction. Simple push-button activation raises the deck effortlessly.



### A SAFER, STRONGER DOCK LEVELER

For decades all dock levelers installed in a concrete pit have required an installer to place and weld steel shim under the rear frame in order to level the device and provide long-term support. This conventional process can lead to install errors as installers are often working under the dock leveler in a cramped environment and may not use the correct size shim and/or weld the shim properly. The result... the dock leveler can suffer structural fatigue which may lead to expensive repair or replacement.



#### DESIGN ADVANTAGES:

- Greater structural strength & durability
- Eliminates installation issues common with conventional dock levelers
- Ensures level transition from warehouse floor to dock leveler
- Eliminates premature structural fatigue due to improperly shimmed/installed dock leveler

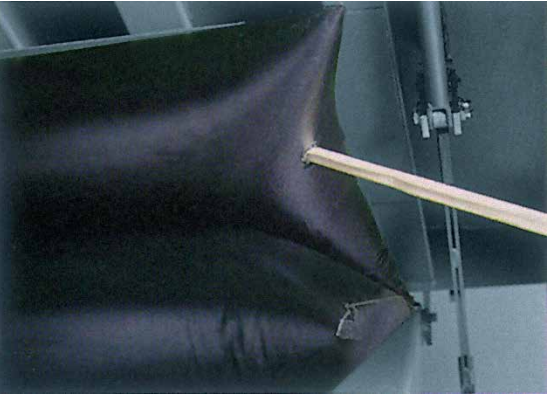


## DURABILITY: IT'S IN THE BAG

The heart of the Serco air bag dock leveler — the air bag — is made of rugged, reinforced coated polyester fibers. The bags are resistant to many chemicals, gasoline, oil spills, cuts, scrapes and even punctures. To ensure operational efficiency even in the toughest conditions (like yours), we put Serco Air Bag lifting technology through extensive testing.

### PUNCTURE TEST

Even with numerous puncture holes, the Serco Air Bag continued to operate. The holes did not "Star," tear or rip and were easily repaired with an inexpensive vinyl patch, returning the leveler to full operating efficiency.



### ENVIRONMENTAL TEST

To prove the Serco Air Bag's durability, 100 units were installed in a variety of extreme environments for a full year. Extreme heat, extreme cold, caustic chemicals, high altitude and high traffic volume environments didn't affect the air bag performance in any way.

### CYCLE TESTING

Since their introduction in 1994, air powered dock levelers have completed an estimated 47 million cycles with an impressive record of only 0.4% fan/motor claims and 0.1% air bag claims. That's 5.9 million days of operation. In fact, the Serco Air Bag has been tested the equivalent of 20 years of service at a standard dock position (that's over 200,000 cycles) and still worked without permanent damage that impeded the operation of the leveler. Compare air-powered levelers with mechanicals for operational efficiency and cost of ownership and you'll see why they are fast becoming a more popular addition to docks around the world.

## LOW-PRESSURE AIR BAG TECHNOLOGY FOR TOUGH, RELIABLE PERFORMANCE.

The Serco Air Bag Dock Leveler utilizes the same concepts and the same laws of physics that have made low-pressure air bags a tough, proven lifting technology for over 50 years. The Serco air bag is manufactured from rugged polyvinylchloride-coated polyester fibers. which operates efficiently from -65° to +200°F (-54° to +93°C).

## SERCO AB DOCK LEVELERS SAVE MONEY:

MECHANICAL DOCK LEVELER COSTS	SERCO AIR BAG DOCK LEVELER COSTS
<b>Estimated 5-Year Maintenance Cost:.....\$900.00</b> <ul style="list-style-type: none"><li>• Lubrication of over 20 points every 90 days. Adjust activation springs and lip extension as necessary.</li><li>• Time Required: 45-60 minutes per unit every 90 days</li></ul> <i>(Based on 3 hours per year @ \$60/hr.)</i>	<b>Estimated 5-Year Maintenance Cost:.....\$200.00</b> <ul style="list-style-type: none"><li>• Light oil on four areas every 90 days. No adjustments necessary.</li><li>• Time Required: 10 min. per unit every 90 days</li></ul> <i>(Based on 40 minutes per year @ \$60/hr.)</i>
<b>Estimated 5 Year Replacement Parts Cost: .....\$953.00</b> <i>(includes 1.5 hours labor per service call (4 total) @ \$60/hr.)</i>	<b>Estimated 5 Year Replacement Parts Cost: .....\$0.00</b> <i>(includes 1.5 hours labor per service call (4 total) @ \$60/hr.)</i>
<b>Total 5-Year Cost of Ownership: ..... \$1,853.00</b> <i>(Costs shown based on average historical product repair and service data by region)</i>	<b>Total 5-Year Cost of Ownership: ..... \$200.00</b> <i>(Costs shown based on average historical product repair and service data by region)</i>



THE SERCO AIR BAG DOCK LEVELER:  
PUSH-BUTTON CONVENIENCE, PROVEN  
PERFORMANCE. EFFICIENT OPERATION.  
ALL AT AN AFFORDABLE PRICE.

THE CLEAN FRAME®: EASY ACCESS BY DESIGN.

Debris under dock levelers becomes a risk to the function and life of a leveler. Debris is overlooked because it is hidden from sight. Debris holds moisture which can prematurely rust out the mechanisms underneath the dock leveler causing operational issues. The debris also attracts insects and rodents to your facility.

Serco's unique CLEAN FRAME® design provides full structural integrity without conventional front frame members. The CLEAN FRAME® design allows wide-open access to the leveler pit for easy clean-up of spills, trash removal and routine maintenance.

The air bag is easily removed

HEAVY-DUTY SERCO STRENGTH.  
STANDARD ON ALL MODELS.

The leveler deck and lip are manufactured with a heavy-duty, high-tensile steel (depending on selected capacity), with a unique beam design that can withstand repeated impacts of fully-loaded forklifts. The torsionally-capable beam design provides the strength required for fully-loaded forklifts and enables the deck to conform to out-of-level trailers.

Structural beams are fully welded to the front header assembly and are designed to conform to out-of-level trucks. Exclusive split-box beam model shown.

NO SPRINGS. NO HOLD-DOWN. NO WORRIES.

The Air Bag Dock Leveler is activated by a simple push-button located on the interior loading dock wall. Push and hold and the two-stage, single speed fan inflates the air bag to raise the deck. Releasing the button allows the deck to descend to the trailer, reversing the air direction back through the self-cleaning fan motor.

The rugged Hydra-Cam-Plus lip extension allows the lip to extend smoothly at the top of the cycle.



PUSH BUTTON CONVENIENCE

Simple, easy push-button operation. Push to raise the deck and release to lower, it couldn't be easier than that.

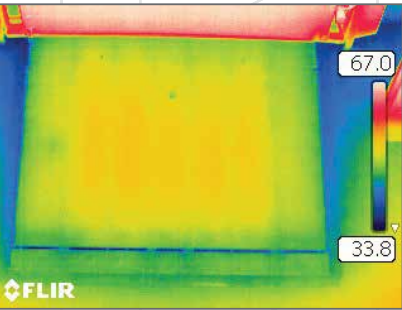


POWERFUL MOTOR

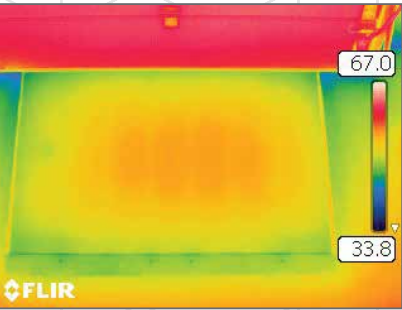
There's no need for special electrical services. Our 10-amp fan with two-stage, single-speed, self-cleaning, filtered UL-approved fan motor uses the same 110-volt power that operates your dock lights.

GUARD AGAINST ENERGY LOSS

Energy Guard® prevents energy loss by providing a superior perimeter seal along the sides and rear of the leveler and blocks dirt, debris & insects from infiltrating the loading dock. The innovative design closes off the gaps between the dock leveler and concrete pit walls, preventing the mass flow of air into and out of the facility and minimizing energy loss. Energy Guard is a factory installed option available on all dock levelers.



BEFORE: Hot or cold air can easily transfer through perimeter gaps.



BEFORE: Hot or cold air can easily transfer through perimeter gaps.

DESIGN ADVANTAGES

- Seal assemblies rotate rather than scrape the pit wall to reduce wear and increase effective life
- Expanded sealing range creates an effective perimeter seal up to 9" above dock level
- Rear hinge seal assembly's durable 2-ply material flexes during operation to block air flow at the rear
- Design leaves access to the pit clear for cleaning and dock leveler inspections
- Factory Installed – No field installation or pit mounted hardware
- Design avoids risk of fabric being cut, torn or damaged by trailers or debris resulting in expensive replacement
- Unrestricted access to pit for cleaning and dock leveler inspection. No curtains or fabric blocking access to the dock leveler and pit

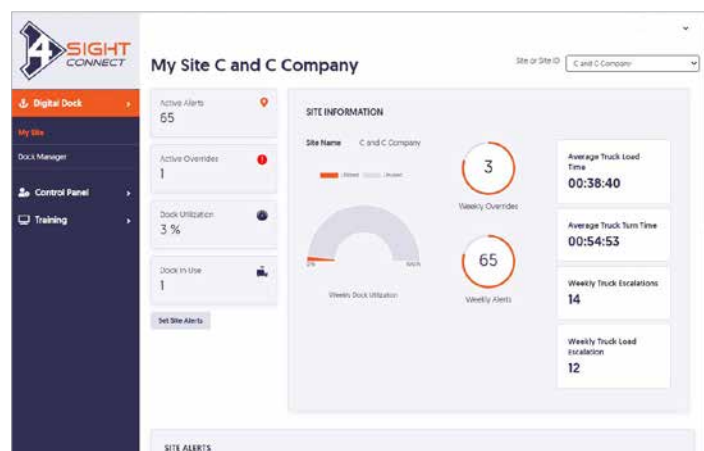


# INTEGRATE YOUR SERCO EQUIPMENT FOR SAFER, MORE EFFICIENT AND PRODUCTIVE DOCKS.



Streamline your loading dock equipment with the simple push of a button by adding the Serco Digital Master Control Panel with HMI. As workloads increase, busy loading docks only get more complicated, making automating your dock equipment necessary in order to meet the demands. Managing your loading dock operation as an integrated system is key to ongoing dock safety. The digital master control panel requires dock workers to operate equipment through a guided sequence, minimizing operator error, training time for seasonal staff and turnover rates.

Merges real-time data collection and on-demand communication with personnel activity, via the world wide web, allowing for better operational decisions. 4SIGHT Connect products provide data to help facilities adjust for better cost management. It observes and calls attention to lags in production and work inefficiencies to eliminate waste, unnecessary work, and resources for cost efficiency and operational growth.



## DON'T JUST OBSERVE IT, LIVE THE EXPERIENCE.

Serco® leads the industry in specialty dock levelers, safety products and programmable control systems, offering a comprehensive portfolio of loading dock and warehouse solutions. We are delighted to invite you to our 6,000 square foot showroom, known as the Academy in Carrollton, Texas. The Academy gives you a very special opportunity to get to know our products in person. Gain hands on experience and enjoy one-on-one interaction with our engineering and manufacturing team in this state-of-the-art facility.



## CAN'T MAKE THE TRIP TO DALLAS?

Let our Mobile Academy come to you. Our 53' completely enclosed and temperature-controlled trailer features over 25 full-sized, fully-functional dock equipment demo units. Call 1-877-778-DOCK (3625) to schedule an appointment and we'll drive our solutions straight to your door.



1612 Hutton Dr., Suite 140  
Carrollton, TX 75006  
800.933.4834  
[www.sercodockproducts.com](http://www.sercodockproducts.com)

4Front Engineered Solutions reserves the right to change specifications and designs without notice and without incurring obligations. 4Front Engineered Solutions products may be the subject of one or more U.S. and/or foreign, issued and/or pending, design and/or utility patents. Serco as word and logo are registered trademarks belonging to ASSA ABLOY Entrance Systems AB or other companies controlled by the same organization. All rights reserved.

©ASSA ABLOY. All rights reserved. Part of ASSA ABLOY. Printed in USA. Form # SCB-DA00-0321